

FEEL 679

unika vaev
INSTYLE

Bringing Design to Life

FEEL 679



/10 JUBILANT



/11 MERRY



/16 EXCITED



/17 AT HOME



/18 CALM



/20 INSPIRED



/35 LUCKY



/36 SOPHISTICATED



/37 WONDERFUL



/39 LIBERATED



40/ SECURE



/41 PRECIOUS



/42 GREAT



/43 CHILLED



/51 DARING



/52 UP FOR IT



/53 ADVENTUROUS



/54 OPTIMISTIC



/55 PEACHY



/62 PLAYFUL



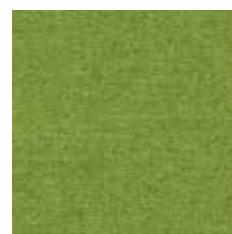
/63 NOSTALGIC



/64 THRILLED



/65 ZEN



/67 FREE



/68 SPLENDID

Patterns shown are not to scale
Product may vary in color due to the nature of the media
Please refer to website for current color range

unika vaev
INSTYLE

FEEL 679



/72 LOVED



/73 REFINED



/74 FABULOUS



/75 WANTED



/76 AMAZING



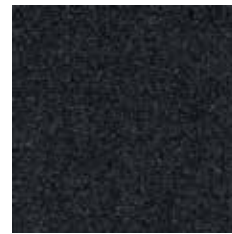
/77 BEAUTIFUL



/78 AWESOME



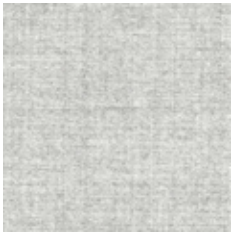
/79 RESPECTED



/80 INVINCIBLE



/81 CONFIDENT



/83 YOUNG AGAIN



/87 ALIVE



/88 UNIQUE



/89 SATISFIED



/90 POSITIVE



/91 GROUNDED





/93 ELATED

Patterns shown are not to scale
Product may vary in color due to the nature of the media
Please refer to website for current color range

unika vaev
INSTYLE

FEEL 679



CONTENT	20% Nylon, 65% Wool, 15% Alpaca
WIDTH / WEIGHT	55" / 12.33 Oz Linear Yard
REPEAT	None
FINISH	None
DURABILITY	 46,500 Martindale Cycles
PERFORMANCE	 Meets all ACT standards
SEAM SLIPPAGE ASTM D4034-92	47.4 lbs Warp, 31.7 lbs Fill
PILLING ASTM D3511	Class 3.5
LIGHTFASTNESS ASTM D3511	Class 5 (40 Hours)
FLAMMABILITY Cal Bulletin 117E, UFAC, AS/NZS 1530.3, AS/NZS 3837, ISO 5660.1 IMO A.652(16)/IMO2010 FTP Code Pt8	
APPLICATION	Upholstery, Screen, Acoustic Drapery
CLEANING CODE	S

ENVIRONMENT

- 80% rapidly renewable content.
- Environmentally Improved Production Process: reduced water and energy consumption, recycling of waste.
- Wool absorbs indoor air contaminants, benefiting indoor air quality.
- 80% biodegradable (natural fiber content) and recyclable.

GREEN STAR + LEED

- FEEL can be used on white furniture certified to Ecospecifier, AFRDI, ECNZ and GECA.
- The Green Star Rating Tool states "Where at least 90% of an item's mass is certified to a GBCA recognized standard, the item can be entered as a certified product at Level A, B or C." Therefore any fabric can be used as fabrics are almost always under 10% by weight of a furniture item.
- 80% rapidly renewable content contributes to LEED MR Credit 6 Rapidly Renewable Materials.

LEED

FEEL can contribute points to the following LEED criteria:

- Bio-Based + Rapidly-Renewable Content (80%)
- Low-VOC
- Extended Producer Responsibility Recycling Program

WELL

FEEL can contribute to the following WELL criteria:

- Low VOC / VOC Reduction: FEEL is low VOC
- Toxic Material Reduction: FEEL is free of PFCs, flame retardants, phthalates and urea formaldehyde