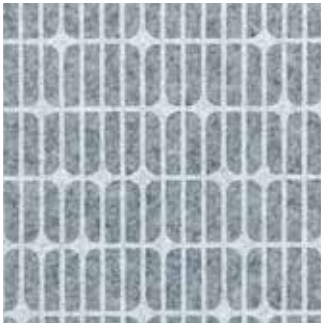


ECOUSTIC® PANEL PRINT META

unika vaev
INSTYLE

Hear yourself think®

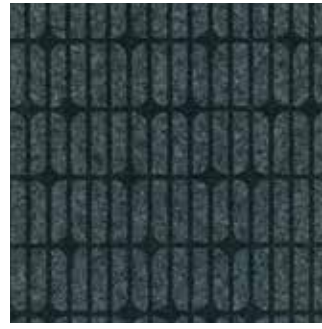
ECOUSTIC® PATTERN PRINT META



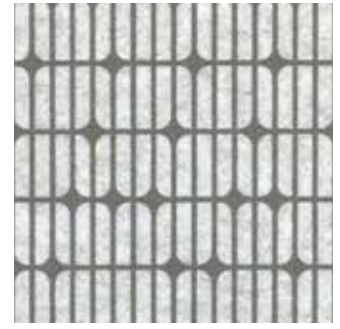
WHITE ON LIGHT GREY



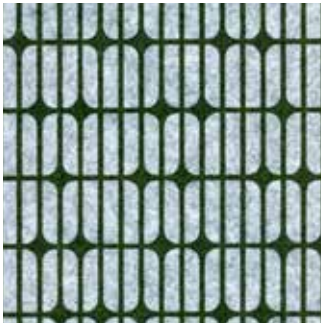
ASH ON WHITE



BLACK ON CHARCOAL



STONE ON NATURAL



OLIVE ON LIGHT GREY

META FULL PANEL PATTERN



Patterns shown are not to scale
Product may vary in color due to the nature of the media
Please refer to website for current color range

ecoustic® global leaders
by **INSTYLE** in acoustic
products

ECOUSTIC® PANEL PRINT META



CONTENT 100% PET (up to 65% recycled PET)

DIMENSIONS

Panel Dimensions 8' 11 1/16" x 3' 11 5/8" (2720mm x 1210mm)
 Print Dimensions 8' 10 5/16" x 3' 11 1/4" (2700mm x 1200mm)
 Screen Panel Dimensions 3' 11 5/8" x 7' 11 1/4" (1210mm x 2420mm)
 Screen Print Dimensions 3' 11 1/4" x 7' 10 1/2" (1200mm x 2400mm)

THICKNESS

0.31" (8mm)
 0.53" (13.5mm) (3 box minimum)
 0.98" (25mm) (3 box minimum)
 1.97" (50mm) (5 box minimum)
 0.47" (12mm) *Custom Screen

PATTERN REPEAT

(h) 23 1/8" x (w) 23 5/8" (588mm x 600mm)
 Meta is railroaded for ecoustic® screen

FLAMMABILITY

ASTM E84 CLASS A
 AS/NZS 1530.3
 AS/ISO 9705
 GB 8624

APPLICATION

Screen, Wall & Ceiling Panel

ACOUSTIC

NRC: 0.30 - 1.00 Depending on panel thickness. See graph on following page

Improved Pinability: ecoustic® Panel + Screen features an improved pinability compared to similar panel products.

Lightweight, Easy to Handle + Install: ecoustic® is an intelligent alternative to traditional panels composed of multiple materials such as particle board, fabric, foam and adhesive.

Designed for the Environment:

- Based on low energy manufacturing
- 100% polyester (up to 65% recycled content)
- Designed for disassembly + recyclable
- Low-VOC
- HPD
- HHI Compliant
- Global Greentag
- EPD

Building Rating Systems: ecoustic® Meta will contribute the following points for Green Star, LEED + WELL building standards.

Criteria	Green Star	LEED	WELL
Recycled Content	√	√	N/A
Low-VOC	√	√	√
EPD	√	√	N/A
3rd Party Greentag Level A Certification	√	√	√
Toxic Material Reduction	N/A	N/A	√
Sound Reducing Surfaces (.98" & 1.97")	N/A	N/A	√

Please Note: Results from performance tests are guidelines only. On site trimming to square each individual panel is essential. This is a hand printed product. Variation in thickness, fiber mix and color as well as flecks and other slight surface blemishes are an inherent feature of this product and are unavoidable. Variation from batch to batch may occur.



ECOUSTIC® PANEL PRINT META

