

# TONIC 10200

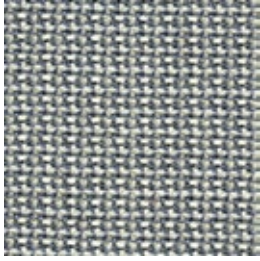
*unika vaev*  

---

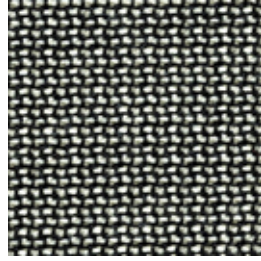
INSTYLE

Bringing Design to Life

# TONIC 10200



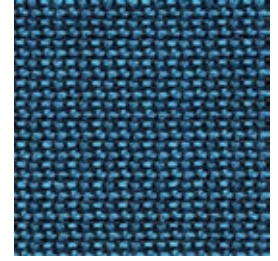
/120 CLEAR



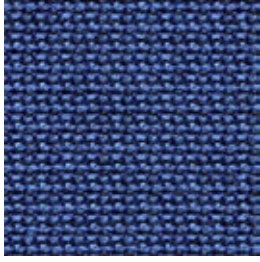
/100 FIX



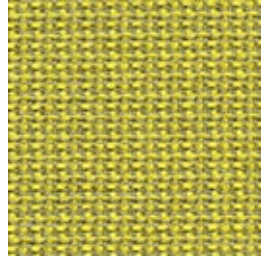
/165 BEST



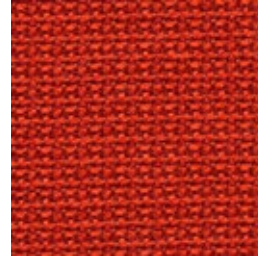
/170 SPRAY



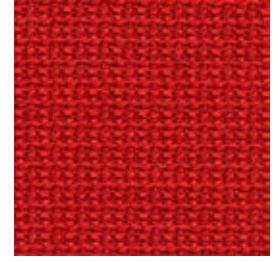
/175 WATER



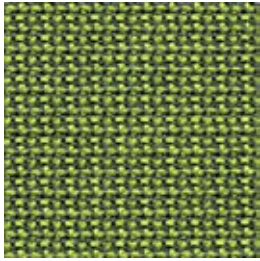
/130 PLUS LEMON



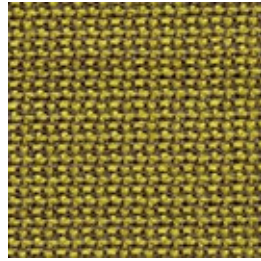
/135 LAUGHTER



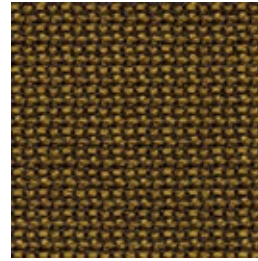
/150 STRAIGHT UP



/155 BITTERS



/140 AND GIN



/145 SOUND



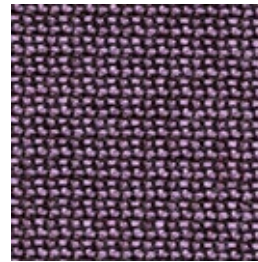
/160 WELCOME



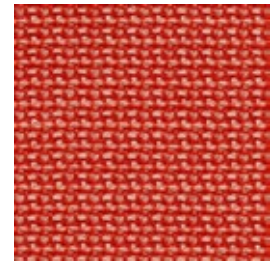
/115 REAL



/125 BOOST



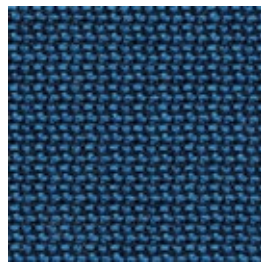
/110 PURE



/180 COCKTAIL



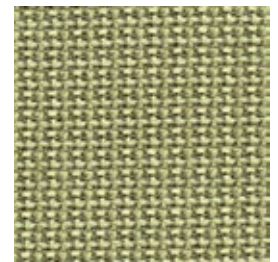
/181 DECANTER



/182 EXCITE



185 FRESH



/186 JUST THE

Patterns shown are not to scale  
Product may vary in color due to the nature of the media  
Please refer to website for current color range

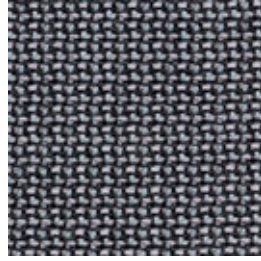
**unika vaev**  
INSTYLE



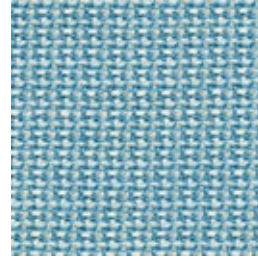
# TONIC 10200



/187 LIME



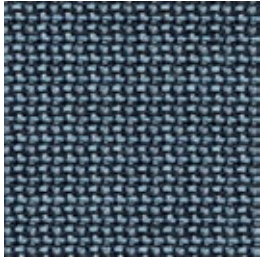
/188 MIX



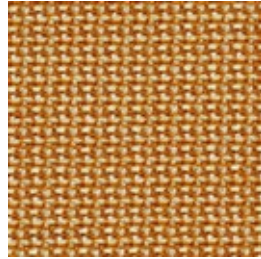
/189 OASIS



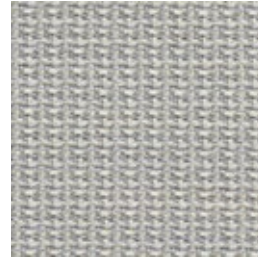
/190 PICK ME UP



/191 SHAKEN



/192 SUPER



/193 TIMELY



/194 VODKA

Patterns shown are not to scale  
Product may vary in color due to the nature of the media  
Please refer to website for current color range

**unika vaev**  
INSTYLE

# TONIC 10200



**CONTENT** 100% Worsted EthEco® Wool

**WIDTH / WEIGHT** 54" / 12.39 Oz Linear Yard

**REPEAT** All Over

**FINISH** None

**DURABILITY**  54,500 Martindale Cycles

**PERFORMANCE**   
Meets all ACT standards

**SEAM SLIPPAGE**  
ASTM D4034-92

**PILLING**  
ASTM D3511

**LIGHTFASTNESS**  
ASTM D3511

**FLAMMABILITY**  
ASTM E84-Unadhered  
Cal Bulletin 117E  
NFPA 260 UFAC  
AS/NZS 1530.3 & 3837  
IMO A.652(16)8.2 & 8.3  
ISO 5660.1

**APPLICATION** Multipurpose, Upholstery, Vertical Surfaces

**CLEANING CODE** S - Spot clean using a mild water-free solvent, or dry cleaning product. Clean only in a well ventilated room and avoid any product containing Carbon Tetrachloride or other toxic materials.

## ENVIRONMENT

- 100% sustainable, rapidly renewable content: EthEco® wool is sourced from non-mulesed sheep cared for on holistically managed farms.
- Environmentally Improved Production Process: Manufactured to strict environmental criteria, reduced water and energy use, reuse of water (30%), recycling of waste, no hazardous substances.
- Wool absorbs indoor air contaminants, benefiting indoor air quality.
- TONIC is certified as low-VOC.
- 100% biodegradable and recyclable.

## BUILDING RATING STANDARD INFORMATION

### GREEN STAR

TONIC can contribute points to the following Green Star criteria:

- Stewardship Programs: TONIC can be reused or recycled through our Revive recycling program
- Low-VOC

TONIC can be used on white furniture certified to Ecospecifier, AFRDI, ECNZ and GECA

The Green Star Rating Tool states "Where at least 90% of an item's mass is certified to a GBCA recognized standard, the item can be entered as a certified product at Level A, B or C." Therefore any fabric can be used as fabrics are almost always under 10% by weight of a furniture item

### LEED

TONIC can contribute points to the following LEED criteria:

- Bio-Based + Rapidly-Renewable Content (100%)
- Low-VOC
- Extended Producer Responsibility Recycling Program

### WELL

TONIC can contribute to the following WELL criteria:

- Low VOC / VOC Reduction: TONIC is low VOC
- Toxic Material Reduction: TONIC is free of PFCs,