

UBER 687

unika vaev

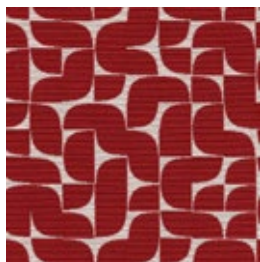
INSTYLE

Bringing Design to Life

UBER 687



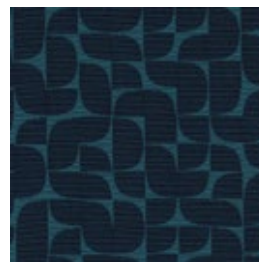
/16 SMART



/21 MODERN



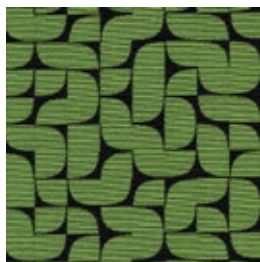
/35 COOL



/40 RICH



/54 FIT



/67 WILD



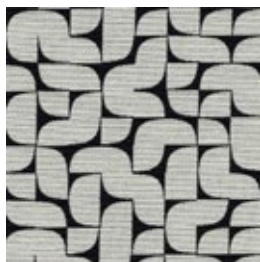
/72 HOT



/75 EXCITING



/79 POWERFUL



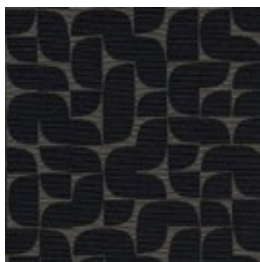
/80 INSPIRED



/81 WONDERFUL



/83 ATTRACTIVE



/90 TALENTED








/94 FAMOUS

Patterns shown are not to scale
Product may vary in color due to the nature of the media
Please refer to website for current color range

unika vaev
INSTYLE

UBER 687



CONTENT	43% Polyester, 57% Cotton
WIDTH / WEIGHT	54" / 10.06 Oz Linear Yard
REPEAT	(w) 5.625" x (h) 4.75"
FINISH	None
DURABILITY	 46,500 Double Rubs
PERFORMANCE	    Meets all ACT standards
SEAM SLIPPAGE ASTM D4034-92	129.8 lbs Warp, 101.8 lbs Fill
PILLING ASTM D3511	Class 5
LIGHTFASTNESS ASTM D3511	Class 4.5 (40 hours)
FLAMMABILITY Cal Bulletin 117E NFPA 260, UFAC AS/NZS 1530.3 AS/NZS 3837	
APPLICATION	Upholstery
CLEANING CODE	S - Spot clean using a mild water-free solvent, or dry cleaning product. Clean only in a well ventilated room and avoid any product containing Carbon Tetrachloride or other toxic materials.

ENVIRONMENT

- 57% rapidly renewable content (cotton).
- 43% third-party certified polyester yarn: meets human ecological requirements according to Oeko-Tex Standard 100 Class I.
- Environmentally Improved Production Process: reduced water and energy consumption, reuse + recycling of waste

GREEN STAR + LEED

- UBER can be used on white furniture certified to Ecospecifier, AFRDI, ECNZ and GECA.
- The Green Star Rating Tool states "Where at least 90% of an item's mass is certified to a GBCA recognized standard, the item can be entered as a certified product at Level A, B or C." Therefore any fabric can be used as fabrics are almost always under 10% by weight of a furniture item.
- 57% rapidly renewable content contributes to LEED MR Credit 6 Rapidly Renewable Materials.