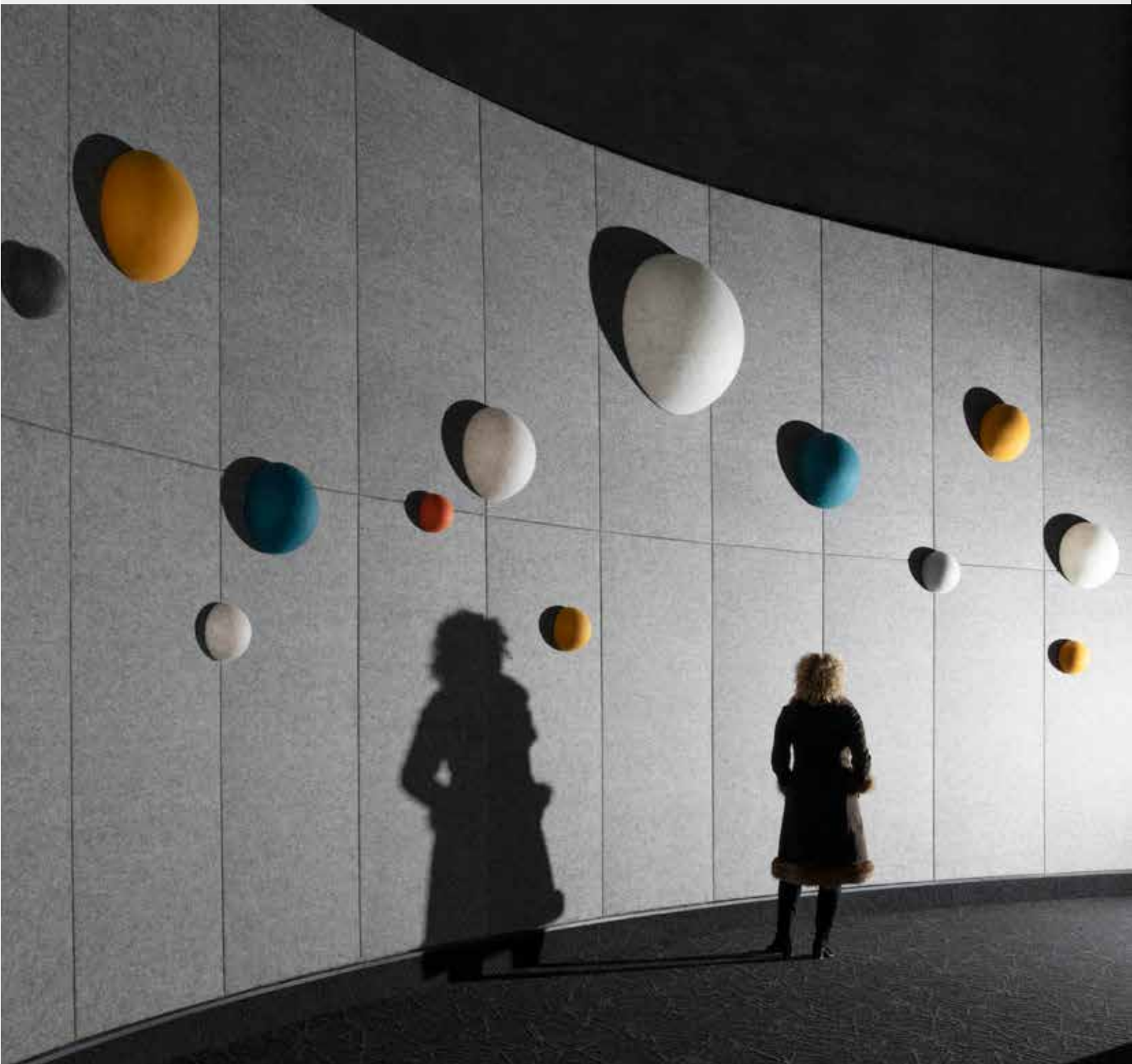


KULA



unika vaev

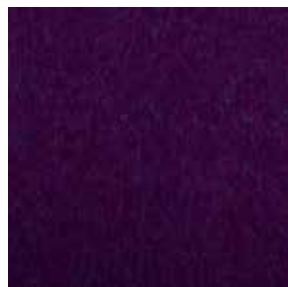
 **kula**
BY BRYNDIS

Hear yourself think®

KULA COLORS



ASH



AWAY



CLOVER



DEEP



EARTH



FIRE



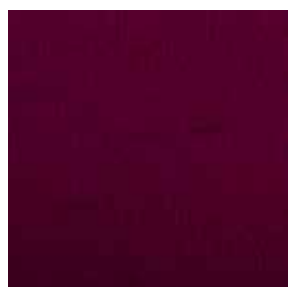
GRASS



MOSS



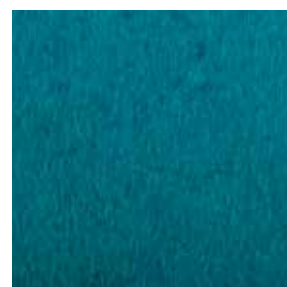
OCEAN



ROSE



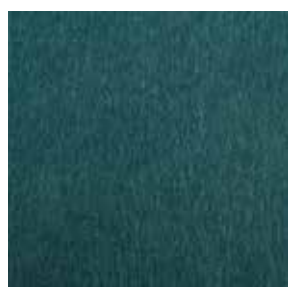
SALT



SEA



SHEEP



SKY



SNOW



STONE



SUN



VOLCANO

Patterns shown are not to scale
Product may vary in color due to the nature of the media
Please refer to website for current color range

KULA

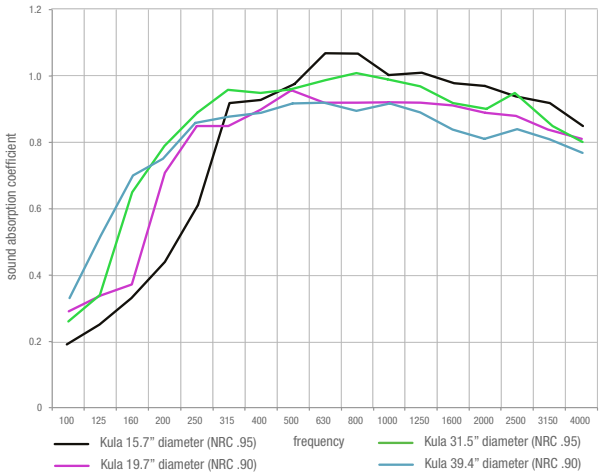


CONTENT	100% Icelandic Wool		
DIMENSIONS / WEIGHT	20: Ø- 7.9"	H- 4.7"	0.9 lbs
	30: Ø- 11.8"	H- 6.7"	1.8 lbs
	40: Ø- 15.7"	H- 7.1"	5.3 lbs
	50: Ø- 19.7"	H- 7.9"	6.6 lbs
	60: Ø- 23.6"	H- 8.7"	9.3 lbs
	80: Ø- 31.5"	H- 10.2"	17.6 lbs
	100: Ø- 39.4"	H- 11.8"	30.9 lbs

FLAMMABILITY Please inquire with customer service

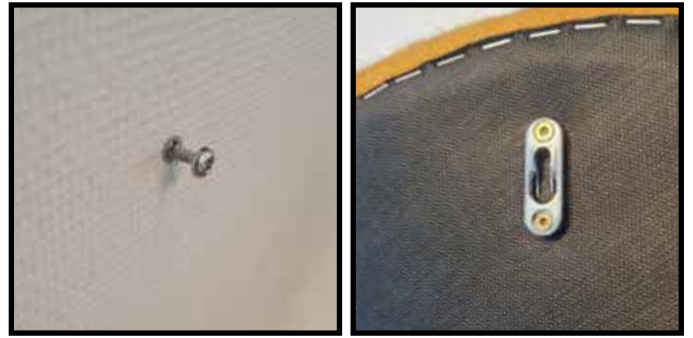
APPLICATION Wall, Vertical Surfaces

ACOUSTIC
EN ISO 11654 NRC: 0.90 - 0.95 | Class A



DESCRIPTION A love of texture and sculptural forms led Icelandic artist and designer Bryndís Bolladóttir to develop Kula, a range of colorful, spherical, and hemispherical products made of Icelandic felted wool. Kula is sold as individual units and are easily hung on a wall providing maximum sound absorption with minimal coverage.

Wall Attachment
A small hanger is attached to the back of Kula allowing for a simple installation process requiring a screw or nail in the wall similar to a picture hanger. See image details below:



Details for Kula attachment to the ceiling can be seen on the following page.

Sound Absorption
For best results cover 35% of the wall being used and form groups. For best results, maximum space between pieces should not exceed one foot.

Flame Resistance
Because of the way the wool fiber is structured, wool requires more oxygen than is available in the air to ignite. Wool also does not melt, drip, or stick to skin when it burns. Wool’s fire resistant attributes include:

- Very high ignition temperature of approx. 1100° Fahrenheit
- A high Limiting Oxygen Index (LOI) (the measure of oxygen level needed to sustain combustion)
- A low heat of combustion (the measure of the amount of heat energy released in the burning process)
- Does not melt or stick
- Produces less smoke and toxins than other textile fibers
- Self-extinguishing

KULA - CEILING MOUNT

Attaching Kula to the ceiling: Fasten the wider attachment piece to the desired location on the ceiling. Then attach the thinner attachment to your Kula and slide hardware onto the ceiling attachment until it locks.

