

# SUEDE PLUSH 729



unika vaev

Bringing Design to Life



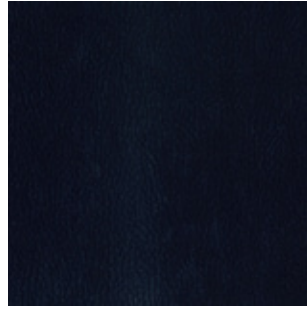
# SUEDE PLUSH 732



/21 SWEET PAPRIKA



/39 BLUE COTTON



/40 DEEP SAPPHIRE



/41 BEST BLUE



/42 DENIM VELVET



/53 SIENNA



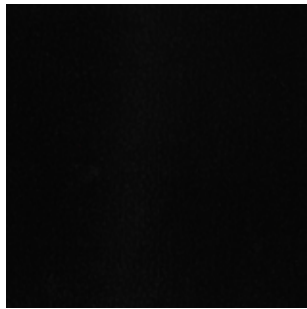
/62 SPRUCE



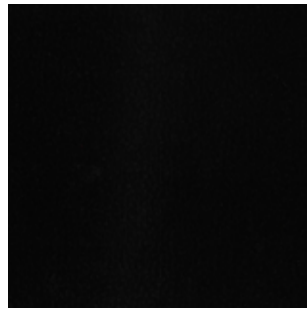
/63 EUCALYPTUS



/72 BURNT UMBER



/79 BLACK CHARCOAL



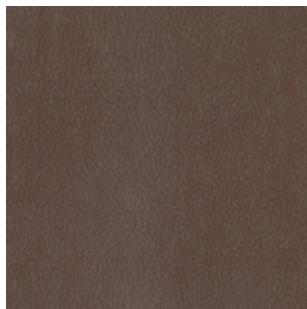
/80 BLACK



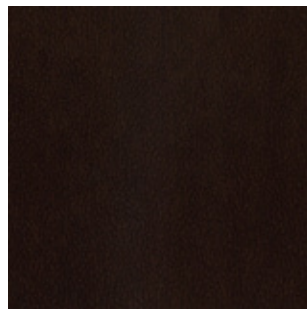
/82 NATURAL ALPACA



/83 BUCKSKIN



/88 SMOKY TAUPE



/90 CHICORY








/92 FOG

Patterns shown are not to scale  
Product may vary in color due to the nature of the media  
Please refer to website for current color range

**unika vaev**

# SUEDE PLUSH 729



<b>DESIGNER</b>	Courtney Brooks
<b>CONTENT</b>	54% Acrylic, 25% Polyamide, 14% Polyester, 7% Cotton
<b>WIDTH / WEIGHT</b>	54" / 14.75 oz linear yard
<b>REPEAT</b>	none
<b>FINISH</b>	none
<b>DURABILITY</b>	 100,000 Martindale cycles
<b>PERFORMANCE</b>	    Meets all ACT standards
<b>APPLICATION</b>	Upholstery, Vertical Surfaces
<b>FLAMMABILITY</b> Cal Bulletin 117e ASTM-E84 unadhered	Class A
<b>CLEANING CODE</b>	WS
<b>DESCRIPTION</b>	SUEDE PLUSH provides the luxury and softness of a high-quality suede while performing at a higher level. This product is inherently ink resistant, stain resistant and resistant to liquids such as red wine and ketchup. Alcohol swabs or warm soap + water provide for ease of clean-ability. Suede Plush is an ideal choice for heavy duty upholstery + panel applications while boasting 100,000 Martindale cycles and 16 sumptuous color offerings.